

ROCKBOARD®

by WARWICK

Installation Manual for RockBoard® Frame 4 XL Mounting Brace for large Multi-Power Supplies English

Thank you for choosing a RockBoard® Frame 4 XL! The Frame 4 XL is an optional replacement brace for the RockBoard® Quad 4.1, 4.2 & 4.3 pedalboards. This allows you to mount even larger and wider multi-power supplies without sacrificing the stability of your board.

Mounting



Step 1

All tools required to mount the RockBoard® Frame XL are included. Remove one of the standard support braces on your RockBoard®. To do this, loosen and remove both screws on the rubber feet.



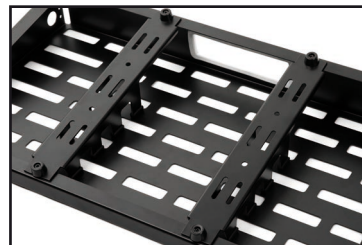
Step 2

Once both screws are removed, you can remove the support brace.



Step 3

Place the rubber shock absorbers on the matching support pads of the RockBoard® Frame 4 XL.



Step 4

Place the Frame 4 XL into your RockBoard® pedalboard.



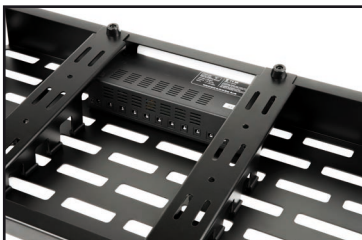
Step 5

Screw the RockBoard® Frame 4 XL to the RockBoard® pedalboard.

Use the included wrench to position the nut. Ensure the Frame 4XL is secure.



Your RockBoard® Frame 4 XL is now completely mounted!



Mount two RockBoard® Frame 4 XL (Quad 4.2 & Quad 4.3 only)

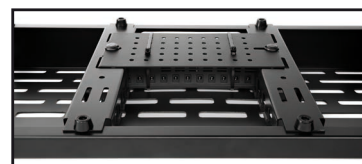
You also have the option to install two RockBoard® Frame 4 XL on the Quad 4.2 and 4.3.

To do this, simply repeat the steps described above using a second Frame 4 XL in place of original bracket.



Mounting of a RockBoard® The Tray

If you also have a RockBoard® The Tray, you can now attach it as well, as described in the associated manual. The Frame 4 XL is fully compatible with The Tray system. To install, use the associated manual.



Note: The manufacturer reserves the right to change these specifications without notice.

USA DISTRIBUTION: Framus & Warwick Music USA, Inc. | info@rockboard.net | 629.202.6790

CHINESE DISTRIBUTION: Warwick Music Equipment Trading (Shanghai) Co. Ltd. | info@warwick.cn | +862134060110

NORTH EUROPEAN DISTRIBUTION: www.rockboard.de | info@rockboard.de | www.w-distribution.de | www.facebook.com/warwickmusicdistribution

Headquarters: Warwick GmbH & Co. Music Equipment KG | 08258 Markneukirchen / Germany | +49 (0) 37422 / 555 - 0

Family Owned • Solar Powered • Sustainably Manufactured in a Green Environment