



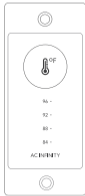
# THERMAL TRIGGER

## FOR AIRPLATE AND MULTIFAN SERIES

USER MANUAL



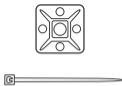
# PRODUCT CONTENT



THERMAL  
TRIGGER  
(x1)



THERMAL  
PROBE  
(x1)



WIRE  
TIE  
(x1)



WOOD  
SCREWS  
(x2)

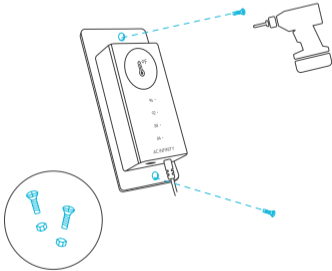


MACHINE NUTS  
& SCREWS  
(x2)

# INSTALLATION

## STEP 1

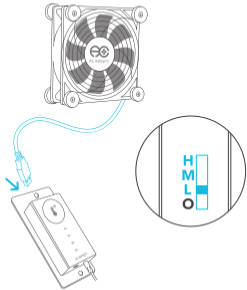
Position your Thermal Trigger's back plate onto the location you want to mount it. Secure it to the wall by using the two woods screws or the two machine screws with nuts.



# PRODUCT SETUP

## STEP 1

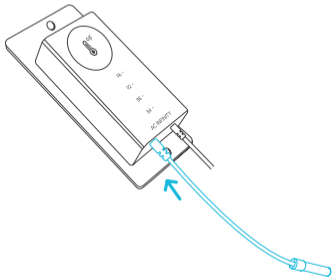
Locate the male USB connector of the fan set and plug it into the top side of the Thermal Trigger.



# PRODUCT SETUP

## STEP 2

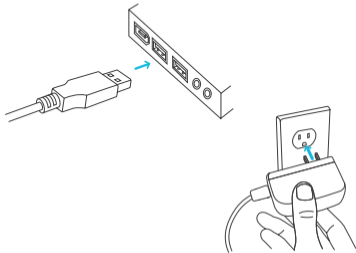
Locate the connector plug of the thermal probe and plug it into the bottom side of the Thermal Trigger.



# PRODUCT SETUP

## STEP 3

You can power the thermal trigger by plugging the unit's USB male connector into a standard USB port. If the MULTIFAN or AIRPLATE fan you purchased included a power adapter, you may also plug the USB male connector into it and then plug the adapter into an outlet.

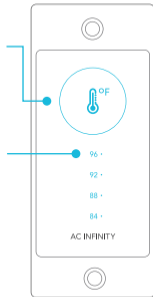


# THERMAL TRIGGER CONTROLLER

To cycle through the options, press the round button. The first four options are to set the trigger temperature. The fans will turn on, and the respective light will also be on, when the probe's temperature is at or above the temperature you chose. The fans will shut off when the temperature is 4° F below the set temperature.

The next setting is the Always-On Mode which is shown when all four lights are on. The fans will run continuously regardless of temperature. Pressing the round button again will turn the fans and thermal trigger off.

If the lights are blinking, it means that it is not getting a signal from the thermal probe. When this happens, the fans will run continuously regardless of temperature. Note that the thermal trigger has a memory function so if there is a power outage, it will remember its previous setting when power is available to it again.





## WARRANTY

This warranty program is our commitment to you, the original purchaser, that each product sold by AC Infinity will be free from defects in manufacturing for a period of two years from the date of purchase. If a product is found to have a defect in material or workmanship, we will take the appropriate actions defined in this warranty to resolve any issues.

The warranty program applies to any order, purchase, receipt, or use of any products from AC Infinity. The program covers products that have become defective, malfunctioned, or expressively if the product becomes unusable.

The warranty program goes into effect on the date of purchase. The program will expire two years from the date of purchase. If your product becomes defective during that period, AC Infinity will replace your product with a new one or issue you a full refund.

The warranty program does not cover abuse or misuse. This includes physical damage, submersion of the product in water, incorrect installation such as wrong voltage input, and misuse for any reason other than intended purposes. AC Infinity is not responsible for consequential loss or incidental damages of any nature caused by the product. We will not warrant damage from normal wear such as scratches and dings.



**If you are not 100% satisfied with this product, we will be happy to replace it or issue you a full refund. Please contact us!**

**COPYRIGHT © 2018 AC INFINITY INC. ALL RIGHTS RESERVED**

No part of the materials including graphics or logos available in this booklet may be copied, photocopied, reproduced, translated or reduced to any electronic medium or machine readable form, in whole or in part, without specific permission from AC Infinity Inc.



[www.acinfinity.com](http://www.acinfinity.com)