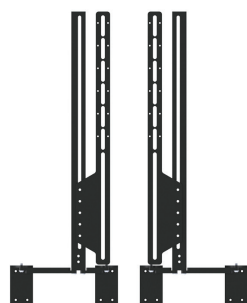


SPL3 UNIVERSAL MOUNTING BRACKET

Installation guide for James Loudspeakers SPL3 SoundBar series universal mounting bracket.
Part Number: BRK.SPL3.UN



Part A (Pre-Assembled)
(2) Fixed brackets, (2) Sliders,
(2) 2.5" swivel joints, part B,
(2) 5" swivel joints, part C,
(4) Bar Plates.



Part B
(2) Additional
2.5" (63.5mm)
Swivel Joints



Part C
(2) Additional
5" (127mm)
Swivel Joints



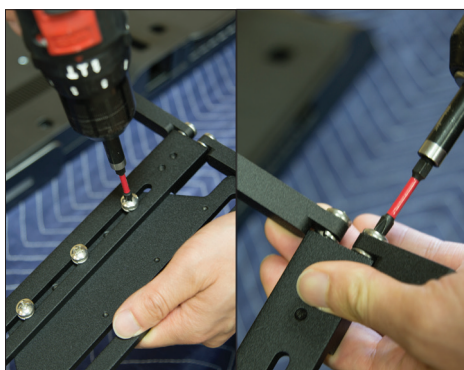
Part D
(8) Holding Tabs

BRACKETS SUPPLIED HARDWARE

Part	QTY	Screws
E	28	Round Spacers (1.25" x 0.125")
F	18	UNC 8-32 x 3/8" Flat Head Philips Screws
G	4	M8-50mm Pan Head Philips Screws
	4	M8-45mm Pan Head Philips screws
	4	M8-35mm Pan Head Philips screws
H	4	M6-50mm Pan Head Philips Screws
	4	M6-45mm Pan Head Philips screws
	4	M6-35mm Pan Head Philips screws



1 Place the TV on a padded flat surface.



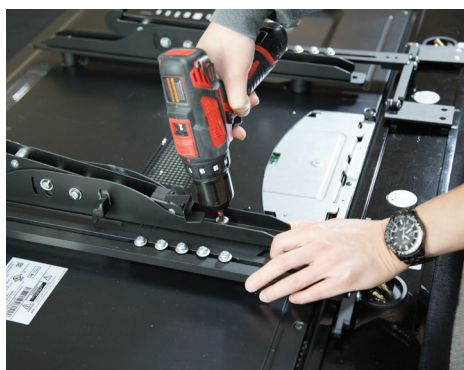
2 Loosen screws on bracket (Part A) and pre-assembled swivel joints.



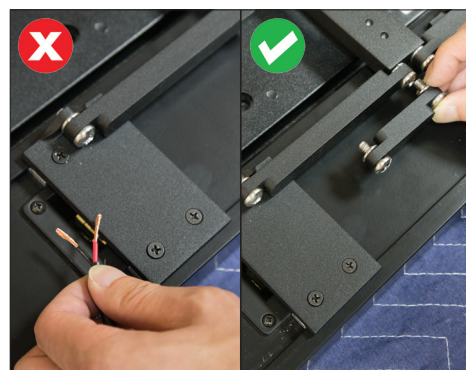
3 Place SoundBar evenly below the tv.



4 Determine the amount of spacers needed (Part E). The bracket and slider should slide up and down without interference from TV.

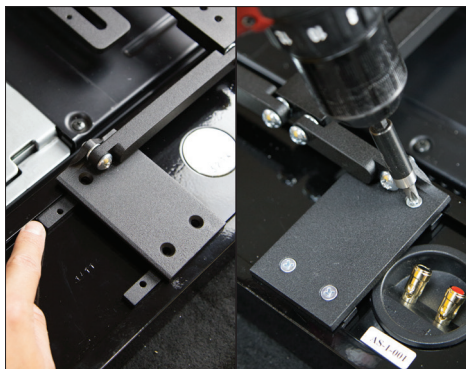


5 Determine the screw size, M6 or M8, required to mount your wall bracket to the TV. Select either the M6 (Part H) or M8 (Part G) hardware bag. 3 lengths are provided, 35mm, 45mm, and 50mm. Select the correct length to match the spacer quantity (height) so the screw properly holds the brackets and mount to the TV.
(Non James TV bracket shown for illustration)

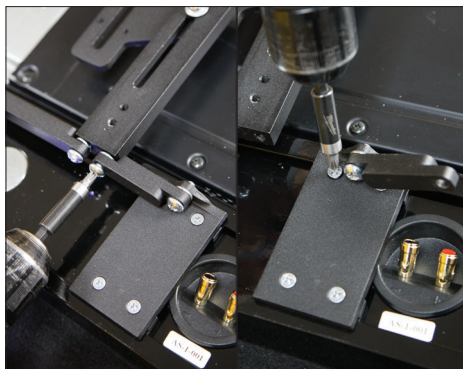


6 If the SoundBar terminals are blocked by a bar plate, swap the swivel joint with the alternate length, either 2.5" (Part B) or the 5" (Part C).

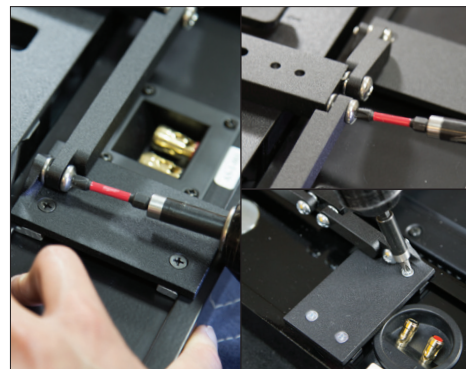
SPL3 UNIVERSAL MOUNTING BRACKET



7 Insert the holding tabs (Part D) into the rear slots of the SoundBar and align with the through-holes of the bar plates. Secure loosely with the 8-32 x 3/8" flat head Philips screws (Part F).



8 In order to secure the fourth screw on the bar plate, you must first loosen the swivel joint and rotate in order to secure the screw tightly.



9 Make all final adjustments to swivel joints and bracket tabs, make sure to avoid stressed positions/alignments. Lastly, tighten all screws on joints & tabs. Ensure the SoundBar is still snug to the TV.



10 Connect wires to terminals, ensuring polarity, before mounting to wall.



11 Follow the manufacturer's instruction for the wall mount installation, and mount TV to mount (will require 2 or more people).